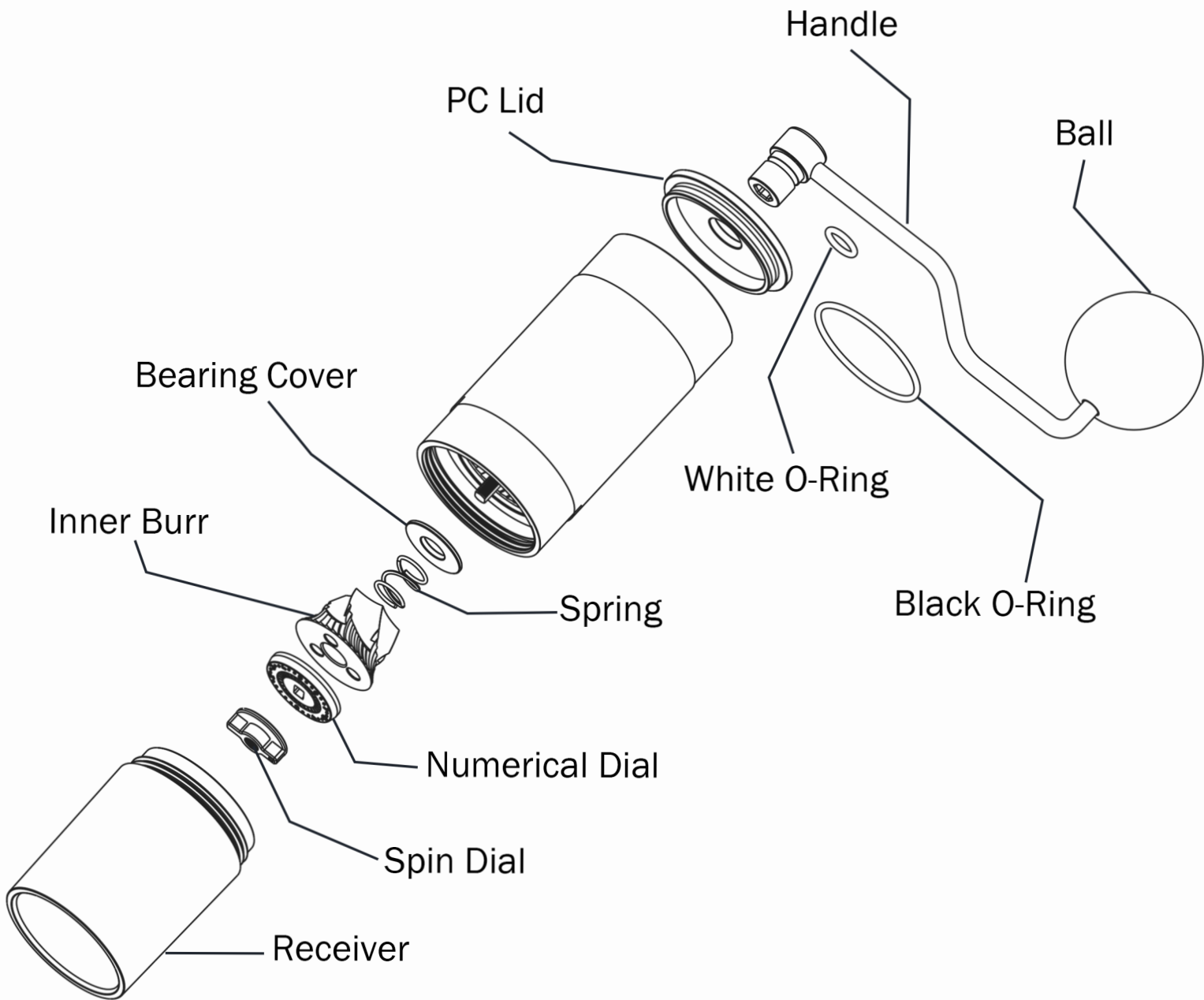


# KIN®Grinder



# KINGrinder

The Interior Adjustment of K0, K1, K2, K3, K5 manual coffee grinder

## KINGrinder Manual - Interior Adjustment

### How to operate the grinder?

1. Rotate anti-clockwise to the desired grind setting from zero.
2. Take out the **handle** and the **PC lid**, load 20~25g of coffee beans into it.
3. Put on the **handle** and the **PC lid** then spin the **handle** clockwise till it has done.

### How to install the PC lid? (There are method A and method B)

- A. Default setting: the **PC lid** and the **handle** are separate-able for grinding (drill-grinding is applicable).
- B. Attach the **PC lid** and the **handle**: Take out the **Black O-ring** - Place the **White O-ring** into the groove.

### How to adjust grind setting?

1. Take out the **receiver**. Hold the **handle** to prevent rotation.
2. Rotate the **spin dial** clockwise till tightened. The corresponding number is zero and the number on the **numerical dial** may not be the same as the number of clicks from the grind setting.
3. Rotate the **spin dial** anti-clockwise from the zero to your grind size.
4. Rotate the **spin dial** anti-clockwise for a coarser grind and vice versa.

KINGrinder	K0	K1	K2	K3	K5
Extra Fine	×	28~35	28~40		
Fine	×	35~60	40~60		
Medium-Fine	60~80				
Medium	80~100			80~120	80~100
Coarse	140				

## How to disassembling the grinder?

1. Take out the **receiver**. Rotate the **spin dial** anti-clockwise for dismantling the grinder.
2. Take out the components in order. The **spin dial**, the **numerical dial**, the **inner burr**, the **spring** and the **bearing cover**.

## How to assembling the grinder?

1. Put on the components in order. The **bearing cover** and the **spring**. There are two shapes of the **bearing cover**: flat design and curve design. The curve design shape of the **bearing cover** facing upward.
2. Attach the **inner burr** and the **numerical dial** to the rectangle shape of the central shaft to proceed with assembling the grinder.
3. Install the **spin dial** and rotate clockwise to complete the assembly.

## What's to do and not to do?

- Cleansing with a brush.
- Don't wash the grinder with water.
- Don't disassemble the **burr ring unit**.

@: [hello@kingrinder.com](mailto:hello@kingrinder.com)

Website: [www.kingrinder.com](http://www.kingrinder.com)

Instagram: [KINGrinder](#)

Linktree: [KINGrinder](#)

# KINGrinder